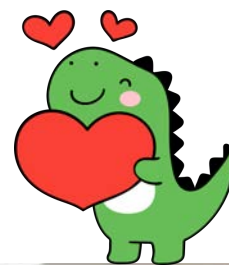




FEBRUARY 2026

HCPC CONNECTIONS

HARNETT COUNTY PARTNERSHIP FOR CHILDREN



HELLO FRIENDS!

Love is in the air at the Harnett County Partnership for Children, and our HCPC Connections newsletter is *stomping* into a new month! In February, we're celebrating big hearts, tiny arms, curious minds, and families growing together, because at HCPC, love is never *extinct*! From giggles to growth spurts, our programs are *tricera-tops* when it comes to supporting children and caregivers every step of the way.

We're having a *dino-blast* connecting families through our Ready to Grow Playgroup, Circle of Parents, Zumbini, and Grow on the Go programs - enough to make every family *roar* with joy. It's all about building strong bonds, sparking learning, and helping families feel supported - especially in those times it feels like you're parenting in a *Jurassic World*! 🦖

Mark your calendars and don't miss your chance to register for a Circle of Parents Super Bowl lunch on Thursday, February 5th, where parents can connect and enjoy good food together. On February 13th, you'll want to make plans to be a part of a love-filled Open Play Friday paired with Zumbini dance moves and smiles.

Thanks for being part of our HCPC *herd*- together, we're proving that when families stick together, love never goes *extinct*!



HCPC MISSION:

Our mission is to improve the quality of life for young children and families in Harnett County through community based programs focusing on health, education, and family support.

Follow Us on Social Media



GET CONNECTED FOR THE
LATEST HCPC NEWS &
UPDATES



on Facebook
[@HarnettCountyPartnershipForChildren](#)



on Instagram [@hcopartnershipforchildren_](#)



on TikTok [@HarnettPartnershipForChildren](#)



on YouTube [@harnettcountypartnershipfo9443](#)



LOCATIONS

Angier Public Library:

28 N Raleigh St, Angier, NC

Cameron RTG Group:

107 Carletta Cagle Dr, Cameron

Erwin COP & RTG Groups:

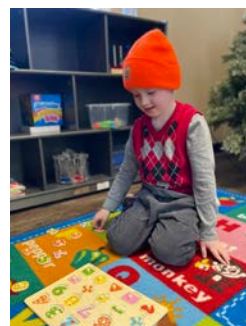
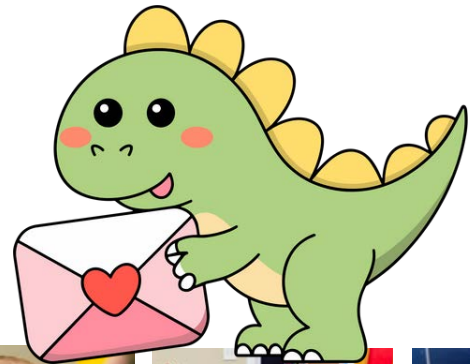
494 Antioch Church Rd, Dunn

Erwin Public Library:

110 W F St, Erwin

Lillington COP & RTG Groups:

170 Pine State St, Lillington



HCPC STAFF:

Tara Fish, Executive Director

Janine Bogwicz, Community Outreach Coordinator

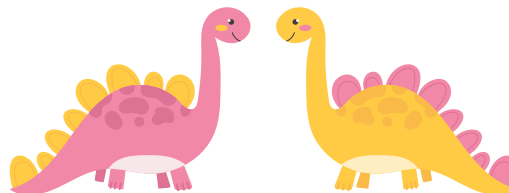
Jordan Ellis, Family Support Specialist

Debbie Fann, Fiscal Specialist

Ashleigh Goss, Early Childhood Program Specialist

Whitney Heath, Family Support Specialist

Melanie Jacobson, Early Childhood Program Specialist



Carmen Martell, Lead Family Support Specialist

Kim Polinski, NC Pre-K Program Support Specialist

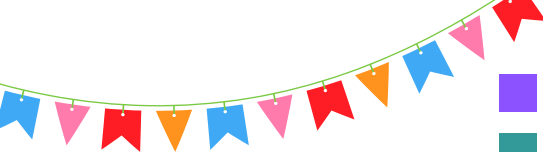
Lynda Turlington, Early Childhood Program
Coordinator

Lena West, NC Pre-K Program Support Specialist

Katie Willoughby, Family Support Specialist



170 Pine State St, Lillington, NC 27546 / 910-893-2344 / www.harnettsmartstart.org



- Cameron Ready to Grow Playgroup (RTG)
- REGISTRATION REQUIRED
- Erwin Ready to Grow Playgroup (RTG)
- Open Play
- Lillington Ready to Grow Playgroup (RTG)
- Circle of Parents (COP)

FEBRUARY

SUN. MONDAY TUESDAY WEDNESDAY THURSDAY FRIDAY SAT.

1 9am - 10:30am: RTG (Lillington) 11am - 12:30pm: RTG (Lillington) 10am- RTG (Erwin) 	2 9am - 10:30am: RTG (Lillington) 11am - 12:30pm: RTG (Lillington) 10am- RTG (Erwin) 	3 9:30am- COP (Lillington) 1:30pm – 3pm: RTG (YMCA)	4 9:30am- COP (Erwin) 10am – 11:30am: RTG (Lillington)	5 10:30am- COP (Lillington) 1:30pm – 3pm: GOTG (Angier Public Library)	6 9am - 10:30am: Open Play (Lillington) 11am - 12:30pm: Open Play (Lillington) 	7
8 9am - 10:30am: RTG (Lillington) 11am - 12:30pm: RTG (Lillington) 10am- RTG (Erwin) 	9 9am - 10:30am: RTG (Lillington) 11am - 12:30pm: RTG (Lillington) 10am- RTG (Erwin)	10 9:30am- COP (Lillington) 1:30pm – 3pm: RTG (YMCA) 	11 9:30am- COP (Erwin) 10am – 11:30am: RTG (Lillington)	12 10:30am- COP (Lillington) 1:30pm – 3pm: GOTG (Angier Public Library)	13 9am - 10:30am: Valentine's Day Open Play w/ Zumbini (Lillington) 11am - 12:30pm: Valentine's Day Open Play w/ Zumbini (Lillington) 	14 HAPPY VALENTINE'S DAY
15 9am - 10:30am: RTG (Lillington) 11am - 12:30pm: RTG (Lillington) 10am- RTG (Erwin) PRESIDENT'S DAY	16 9am - 10:30am: RTG (Lillington) 11am - 12:30pm: RTG (Lillington) 10am- RTG (Erwin)	17 9:30am- COP (Lillington) 1:30pm – 3pm: RTG (YMCA)	18 9:30am- COP (Erwin) 10am- RTG Dental Health Day (Lillington) 	19 9:30am- COP (Lillington) 1:30pm – 3pm: GOTG (Erwin Public Library)	20 9am - 10:30am: Open Play (Lillington) 11am - 12:30pm: Open Play (Lillington)	21
22 9am - 10:30am: RTG (Lillington) 11am - 12:30pm: RTG (Lillington) 10am- RTG (Erwin) 	23 9am - 10:30am: RTG (Lillington) 11am - 12:30pm: RTG (Lillington) 10am- RTG (Erwin) 	24 9:30am- COP (Lillington) 1:30pm – 3pm: RTG w/ Zumbini (YMCA)	25 9:30am- COP (Erwin) 10am – 11:30am: RTG (Lillington) 	26 9:30am- COP (Lillington) 1:30pm – 3pm: GOTG (Erwin Public Library)	27 9am - 10:30am: Open Play (Lillington) 11am - 12:30pm: Open Play (Lillington) 	28

KIDDO SPOTLIGHT:

LUCA, 4 YRS OLD

What is your favorite part of Ready to Grow Playgroups?

"There's a lot of toys."

How do you know you are loved?

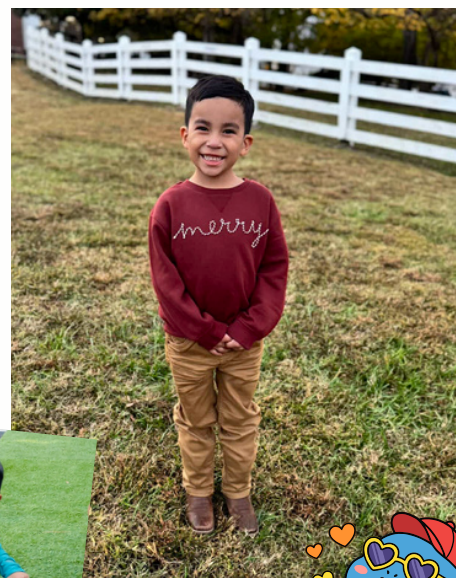
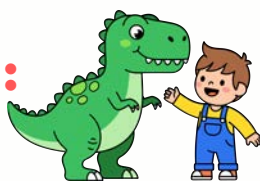
"I get prizes and mom says she loves me a lot!"

Who gives the best hugs? And why?

"Me because I'm strong!"

What activities do you love most in this world?

"Watching TV and playing outside."

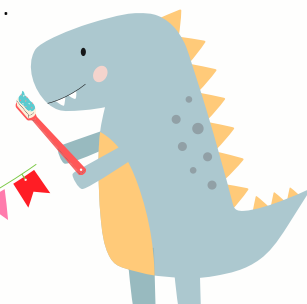


NATIONAL CHILDREN'S DENTAL HEALTH MONTH:

National Children's Dental Health Month raises awareness about the importance of oral health. Developing good habits at an early age and scheduling regular dental visits helps children to get a good start on a lifetime of healthy teeth and gums.

Tips for Brushing

- Don't skip - Making it a habit requires sticking to the schedule. Even when there is a special occasion or if our child is tired, we need to reinforce the importance of brushing.
- Make it fun - Songs that last 2 minutes will help. Reading to your child while they brush may help, too. Even a puppet brushing his teeth can be motivating.
- Learn by example - Children emulate their parents. Brush with your children and they will want to be just like you.
- Trial and error - Try different kinds of toothpaste until you find the one junior likes. Try using the smallest amount he will allow and working your way up to the recommended amount. Even a tiny amount is better than no toothpaste.
- Don't give up - The pain of cavities and lifelong dental issues is more costly and damaging than the dealing with these few moments of nagging battles twice a day.





Circle of Parents

Círculo de Padres



GROW ON THE GO

PLAY, LEARN, AND GROW TOGETHER

Parenting is joyful, but can also present difficulties and challenges.

Es una dicha ser padres, pero también presenta dificultades y desafíos.

Feel empowered, supported, and strengthened as you attend weekly Circle of Parents meetings. Join other Harnett County parents/caregivers at our Circle of Parents group.

Siéntase empoderado, apoyado y fortalecido mientras asiste a las reuniones semanales del Círculo de Padres. Únase a otros padres/proveedor de cuidados del Condado de Harnett en nuestro grupo de Círculo de Padres.

circle of parents®
Sharing Ideas. Sharing Support.



- TUESDAYS & THURSDAYS @ 9:30AM - 11AM
LOCATION: 170 PINE STATE ST. LILLINGTON
- WEDNESDAYS @ 9:30AM - 11AM
LOCATION: 494 ANTIOCH CHURCH RD. ERWIN

To register, email familysupport@harnettsmartstart.org or call 910-893-2344.

Para registrarse, envíe un correo electrónico a familysupport@harnettsmartstart.org o llame al 910-893-2344.



Grow on the Go is a mobile play unit offering play and learn opportunities for Harnett County families with children between the ages of birth to five years old.

Registration is not required - simply find us at our designated location for Pop Up & Play fun!

FEBRUARY SCHEDULE:

The Grow on the Go Playmobile is getting a much needed rest during the month of December. Stay tuned for January dates and locations!

- February 5th & 12th / 1:30pm - 3pm
@Angier Public Library
- February 19 & 26th / 1:30pm - 3pm
@ Cameron YMCA



GRUPO DE JUEGOS LISTO PARA CRECER

TEMA DEL MES:

Sonrisas Brillantes

LOS CUIDADORES APRENDERÁN:

- Formas de apoyar y enseñar a los niños la importancia de mantener sus dientes y bocas limpios y saludables.
- Ideas divertidas para ayudar a enseñar a los niños la manera correcta de cepillarse y cuidar sus dientes.



MENSAJES CLAVE:

1. Los dientes saludables son necesarios porque los usamos para masticar alimentos, hablar y sonreír.
2. Aunque los dientes de leche de nuestros hijos eventualmente serán reemplazados por dientes permanentes, es importante que se cepillen al menos dos veces al día para prevenir la caries dental, que puede causar infecciones, dolor y otras condiciones de salud.



LIBROS RECOMENDADOS:

- Joey Goes to the Dentist, by Candace Vittorini and Sara Boyer-Quick
- Alley Alligator, Awesome Smile, by Timothy E. McNutt Sr. DDS
- Arthur Tricks the Tooth Fairy, by Marc Brown

READY TO GROW PLAYGROUP

THEME OF THE MONTH:

Bright Smiles



CAREGIVERS WILL LEARN:

- Ways to support and teach children the importance of keeping their teeth and mouths clean and healthy.
- Fun ideas to help teach children the proper way to brush and care for their teeth.



KEY MESSAGES:

1. Healthy teeth are necessary because we use them to chew food, to talk and to smile.
2. Even though our children's baby teeth will eventually be replaced with adult teeth, it is important that they brush at least twice daily to prevent tooth decay which can cause infections, pain and other health conditions.



BOOK RECOMMENDATIONS:

- Joey Goes to the Dentist, by Candace Vittorini and Sara Boyer-Quick
- Alley Alligator, Awesome Smile, by Timothy E. McNutt Sr. DDS
- Arthur Tricks the Tooth Fairy, by Marc Brown



READY TO GROW

GRUPO DE JUEGOS LISTO PARA CRECER

Ready to Grow Playgroup facilitates developmentally appropriate playgroups for children and caregivers who reside in Harnett County. Eligible children must be between the ages of birth through 5 years old. Playgroup facilitators use Kaleidoscope Play & Learn Curriculum to provide hands on activities that focus on early literacy and social emotional competency. Caregivers learn about the purpose of play and will connect with other parents during group time. Children and caregivers will participate in coordinated group activities to prepare the children for success in school.



El Grupo de Juegos Listo para Crecer tendrán sus reuniones en persona en Lillington. Las familias del condado de Harnett, que tengan niños recién nacidos hasta 5 años de edad, son bienvenidos a participar. Las familias tendrán la oportunidad de aprender y jugar con otras familias en persona.

Cameron Playgroup: Tuesdays @ 1:30pm - 3pm

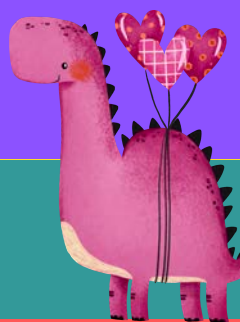
Cameron Grupo: Todos los martes de 1:30pm - 3pm

Erwin Playgroup: Mondays @ 10am - 11:30am

Erwin Grupo: Todos los lunes a las 10am - 11:30am

Lillington Playgroup: Mondays @ 9am - 10:30am OR 11am - 12:30pm; Wednesdays @ 10am - 11:30am

Lillington Grupo: Lunes de 9am a 10:30 o de 11am a 12:30pm; miércoles de 10am a 11:30pm



zümbini®

with Ms. Katie!

- **February 13th / 9am & 11am**
170 Pine State St, Lillington
- **February 24th / 1:30pm**
107 Carletta Cagle Dr, Cameron

Registration
NOT Required!

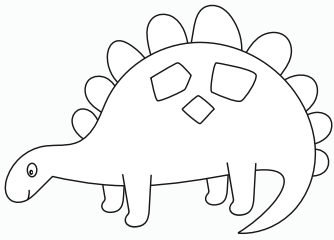




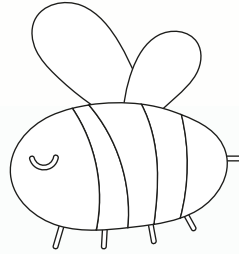
SHARE THE LOVE!

Cut and color the Valentine's Day Cards below
and share with family and friends!

YOU'RE
DINO-MITE!



From: _____



WILL YOU BEE
MY VALENTINE?



From: _____

I LOVE YOU
BEARY MUCH!



From: _____

A LOOK BACK AT JANUARY

