



SEPTEMBER 2025

HCPC CONNECTIONS

HARNETT COUNTY PARTNERSHIP FOR CHILDREN



HEAR YE, HEAR YE, DEAR FRIENDS!

Once upon a time, families across Harnett County discovered a magical place filled with fun, learning, and connection - the Harnett County Partnership for Children! In this kingdom, children are the heroes of every story, parents are the guiding stars lighting the way, and together we create adventures that end in happily-ever-afters. Whether you're beginning a brand-new chapter or continuing your story with us, enchanting opportunities await you this September.

- **Ready to Grow Playgroups** - Step into a land where imaginations bloom, friendships are forged, and every game, giggle, and song helps little ones grow stronger and braver with each turn of the page.
- **Circle of Parents** - Gather around the round table with fellow adventurers to share wisdom, encouragement, and support, knowing that even the greatest heroes need companions for the journey.
- **Superhero Zumbini** - Don your capes and crowns for a lively celebration of music and movement that will have both little heroes and their guardians dancing, laughing, and saving the day together.

So polish your crown, wave your wand, and open the castle gates - this September is filled with storybook moments and magical memories just waiting to be written. Join us as we continue creating happily-ever-afters for families and children across our kingdom!

HCPC MISSION:

Our mission is to improve the quality of life for young children and families in Harnett County through community based programs focusing on health, education, and family support.

Follow Us on Social Media



GET CONNECTED FOR THE LATEST HCPC NEWS & UPDATES



on Facebook
@HarnettCountyPartnershipForChildren



on Instagram @hcopartnershipforchildren_



on TikTok @HarnettPartnershipForChildren



on YouTube @harnettcountypartnershipfo9443



EVENT LOCATIONS:

Cameron RTG Group:

107 Carletta Cagle Dr, Cameron

Erwin COP & RTG Groups:

494 Antioch Church Rd, Dunn

Harnett County Public Library

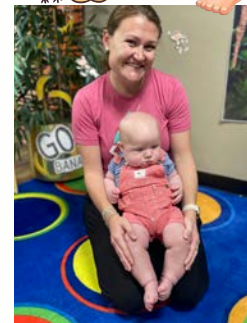
455 McKinney Pkwy, Lillington

Lillington COP & RTG Groups:

170 Pine State St, Lillington

Lillington Riverfront Park

151 E Duncan St, Lillington



HCPC STAFF:

Tara Fish, Executive Director

Janine Bogwicz, Community Outreach Coordinator

Jordan Ellis, Family Support Specialist

Debbie Fann, Fiscal Specialist

Ashleigh Goss, Early Childhood Program Specialist

Whitney Heath, Family Support Specialist

Melanie Jacobson, Early Childhood Program Specialist



Carmen Martell, Lead Family Support Specialist

Kim Polinski, NC Pre-K Program Support Specialist

Lynda Turlington, Early Childhood Program Coordinator

Lena West, NC Pre-K Program Support Specialist

Katie Willoughby, Family Support Specialist



170 Pine State St, Lillington, NC 27546 / 910-893-2344 / www.harnettsmartstart.org

September

-  - Cameron Ready to Grow Playgroup (RTG)
-  - Circle of Parents (COP)
-  - Erwin Ready to Grow Playgroup (RTG)
-  - Grow on the Go Playmobile (GOTG)
-  - Lillington Ready to Grow Playgroup (RTG)
-  - Open Play
-  - Zumbini

SUN. MONDAY TUESDAY WEDNESDAY THURSDAY FRIDAY SAT.

	1 HCPC CLOSED for Labor Day LABOR DAY	2 9:30am - COP (Lillington) 1:30pm - 3pm: RTG (YMCA) 	3 9:30am - COP (Erwin) 10am - 11:30am: RTG (Lillington)	4 9:30am - COP (Lillington) 1:30pm - 3pm: GOTG (HCPL)	5 9am -10:30am: Open Play (Lillington) 11am -12:30pm: Open Play (Lillington) 	6
7 	8 9am - 10:30am: RTG (Lillington) 11am - 12:30pm: RTG (Lillington) 10am-11:30am: RTG (Erwin)	9 9:30am - COP (Lillington) 1:30pm - 3pm: RTG (YMCA)	10 9:30am - COP (Erwin) 10am - 11:30am: RTG (Lillington) 	11 9:30am - COP (Lillington) 1:30pm - 3pm: GOTG (HCPL)	12 	13
14	15 9am - 10:30am: RTG (Lillington) 11am - 12:30pm: RTG (Lillington) 10am - 11:30am: RTG (Erwin) 	16 9:30am - COP (Lillington) 1:30pm - 3pm: RTG (YMCA) 	17 9:30am - COP (Erwin) 10am - 11:30am: RTG Playdoh Day (Lillington)	18 9:30am - COP (Lillington) 1:30pm - 3pm: GOTG (HCPL)	19 9am -9:30am: Superhero Zumbini (Riverfront Park) 10am -10:30am: Superhero Zumbini (Riverfront Park) 	20
21 	22 9am - 10:30am: RTG (Lillington) 11am - 12:30pm: RTG (Lillington) 10am - 11:30am: RTG (Erwin) 	23 9:30am - COP (Lillington) 1:30pm - 3pm: RTG (YMCA)	24 9:30am - COP (Erwin) 10am - 11:30am: RTG w/ Superhero Zumbini (Lillington) 	25 9:30am - COP (Lillington) 1:30pm - 3pm: GOTG (HCPL) 	26 9am -10:30am: Open Play (Lillington) 11am -12:30pm: Open Play (Lillington)	27 
28	29 9-10:30am- RTG (Lillington) 11am-12:30pm- RTG (Lillington) 10am- RTG (Erwin)	30 9:30am- COP (Lillington) 1:30pm- RTG (YMCA) 	The End.			



FAMILY SPOTLIGHT: MURPHY FAMILY



What are some of the most valuable things you've learned from other parents/caregivers in Circle of Parents?

"Some of the most valuable things I've learned from other parents: take one day at a time, every age and stage has its challenges... give yourself grace. Most importantly, take time for yourself - you can't pour from an empty cup."

How does Circle of Parents help you cope with the challenges of parenting?

"Circle of Parents (COP) is a safe place to share your thoughts and feelings. We are all in different stages of life and offer diverse perspectives on parenting. Making time for yourself is one challenge COP helps with. COP is our time as moms to sit back and relax knowing our kiddos are in great hands. Every week I look forward to our meetings."

Has being a part of Circle of Parents helped you feel less isolated as a parent? How so?

"Yes, being a part of Circle of Parents has helped me feel less isolated as a parent. Circle of Parents is my outing for the week. I can get dressed up or not and leave my house feeling energized. It motivates me to start my day off right and make a difference in someone else's. I know I will receive insightful feedback and support. It's uplifting to be surrounded by people going through the same journey."



How has the group helped you grow as a parent or as an individual?

"The group has shown me that there's no one size fits all parenting style. It's trial and error, ups and downs, spicy and sweet, clean and messy... it's all worth it!"

What would you say to someone who's considering joining a parent support group?

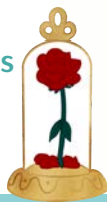
"If you're looking for friendships, support, and parental guidance, then sign up for COP. There's no better place to share your parenthood experiences and make mom friends!"





Circle of Parents

Círculo de Padres



Parenting is joyful, but can also present difficulties and challenges.

Es una dicha ser padres, pero también presenta dificultades y desafíos.

Feel empowered, supported, and strengthened as you attend weekly Circle of Parents meetings. Join other Harnett County parents/caregivers at our Circle of Parents group.

Siéntase empoderado, apoyado y fortalecido mientras asiste a las reuniones semanales del Círculo de Padres. Únase a otros padres/proveedor de cuidados del Condado de Harnett en nuestro grupo de Círculo de Padres.

circle of parents®
Sharing Ideas. Sharing Support.



- TUESDAYS & THURSDAYS @ 9:30AM - 11AM
LOCATION: 170 PINE STATE ST, LILLINGTON
- WEDNESDAYS @ 9:30AM - 11AM
LOCATION: 494 ANTIOCH CHURCH RD, ERWIN



To register, email familysupport@harnettsmartstart.org or call 910-893-2344.

Para registrarse, envíe un correo electrónico a familysupport@harnettsmartstart.org o llame al 910-893-2344.

GROW ON THE GO

PLAY, LEARN, AND GROW TOGETHER



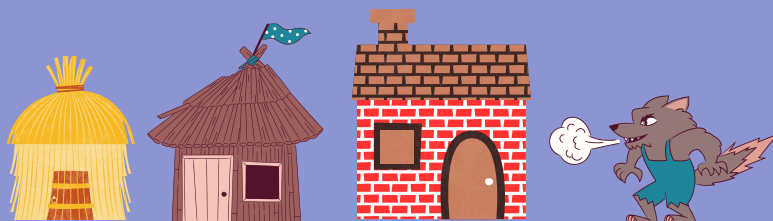
Grow on the Go is a mobile play unit offering play and learn opportunities for Harnett County families with children between the ages of birth to five years old.

Registration is not required - simply find us at our designated location for Pop Up & Play fun!

SEPTEMBER SCHEDULE:

Thursdays / 1:30pm -3pm:

Harnett County Public Library





READY TO GROW

GRUPO DE JUEGOS LISTO PARA CRECER

Ready to Grow Playgroup facilitates developmentally appropriate playgroups for children and caregivers who reside in Harnett County. Eligible children must be between the ages of birth through 5 years old. Playgroup facilitators use Kaleidoscope Play & Learn Curriculum to provide hands on activities that focus on early literacy and social emotional competency. Caregivers learn about the purpose of play and will connect with other parents during group time. Children and caregivers will participate in coordinated group activities to prepare the children for success in school.

El Grupo de Juegos Listo para Crecer tendrán sus reuniones en persona en Lillington. Las familias del condado de Harnett, que tengan niños recién nacidos hasta 5 años de edad, son bienvenidos a participar. Las familias tendrán la oportunidad de aprender y jugar con otras familias en persona.

Cameron Playgroup: Tuesdays @ 1:30pm - 3pm

Cameron Grupo: Todos los martes de 1:30pm - 3pm

Erwin Playgroup: Mondays @ 10am - 11:30am

Erwin Grupo: Todos los lunes a las 10am - 11:30am



Lillington Playgroup: Mondays @ 9am - 10:30am OR 11am - 12:30pm; Wednesdays @ 10am - 11:30am

Lillington Grupo: Lunes de 9am a 10:30 o de 11am a 12:30pm; miércoles de 10am a 11:30pm



zümbini®
with Ms. Katie!

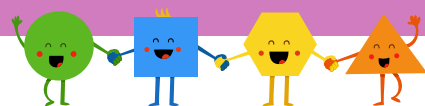
Registration Required!



- **September 19th / 9am - 9:30am**
- **September 19th / 10am - 10:30am**
Lillington Riverfront Park
151 E Duncan St, Lillington)
- **September 24th / 10am**
494 Antioch Church Rd, Dunn



GRUPO DE JUEGOS LISTO PARA CRECER



TEMA DEL MES:

Todo sobre las formas

LOS CUIDADORES APRENDERÁN:

- Cómo ayudar a su hijo a identificar, emparejar y clasificar formas simples
- Cómo aprender las formas ayuda a los niños a desarrollar habilidades matemáticas tempranas

MENSAJES CLAVE:

1. Aprender sobre las formas se puede trabajar fácilmente durante las actividades diarias. Cada objeto tiene una forma, así que podemos observar y aprender sobre formas en todas partes.
2. Para ayudar a los niños a aprender más sobre las formas, podemos:
 - Señalar formas a los niños a lo largo del día
 - Hacer que los niños ayuden con las tareas que requieren clasificación, como guardar los utensilios o la ropa.



LIBROS RECOMENDADOS:



- Shapes in Buildings by Rebecca Rissman
- Giant Pop-Out Shapes: A Pop-Out Surprise Book by Chronicle Books
- Mouse Shapes by Ellen Stoll Walsh
- Is It Larger? Is It Smaller? by Tana Hoban

READY TO GROW PLAYGROUP



THEME OF THE MONTH:

All About Shapes

CAREGIVERS WILL LEARN:

- How to help their child identify, match, and sort simple shapes
- How learning shapes help children develop early math skills

KEY MESSAGES:

1. Learning about shapes can easily be worked on during everyday activities. Every item has a shape so we can look and learn about shapes everywhere.
2. To help children learn more about shapes, we can:
 - Point out shapes to children throughout the day
 - Have children help with chores that require sorting, such as putting away silverware or the laundry



BOOK RECOMMENDATIONS:

- Shapes in Buildings by Rebecca Rissman
- Giant Pop-Out Shapes: A Pop-Out Surprise Book by Chronicle Books
- Mouse Shapes by Ellen Stoll Walsh
- Is It Larger? Is It Smaller? by Tana Hoban

