



JANUARY 2025

# HCPC CONNECTIONS

HARNETT COUNTY PARTNERSHIP FOR CHILDREN



## HAPPY NEW YEAR FRIENDS!

Welcome to our January newsletter, where we kick off the year with excitement, growth, and a sprinkle of fun! As the winter months unfold, it's the perfect time to explore how little ones continue to grow, learn, and develop in their early years. From their first words to mastering new skills, every moment is a new adventure and we are so excited to be a part of your child's growth and development!

This month, we're diving into the wonderful world of early childhood development—highlighting the magical ways young children learn through play, curiosity, and exploration. We also recognize how important family connections are in a child's development, and we'll share tips on how to nurture those bonds with meaningful activities at home.

As the temperatures drop, winter is the perfect time to embrace cozy indoor adventures and outdoor fun! Whether it's bundling up for a winter day at the park or curling up with a good book, we'll offer ideas to bring warmth, laughter, and learning into every moment with your little one. Let's make this year full of love, connection, and lots of winter wonder!

### SPECIAL UPCOMING DATES:

- **January 1:** HCPC offices closed
- **January 17:** HCPC Winter Wonderland Sensory Play Party
- **January 20:** HCPC closed for Martin Luther King Jr. Day



HAPPY  
NEW  
YEAR!

## HCPC MISSION:

Our mission is to improve the quality of life for young children and families in Harnett County through community based programs focusing on health, education, and family support.

# Follow Us on Social Media



GET CONNECTED FOR THE LATEST HCPC NEWS & UPDATES



on Facebook @HarnettCountyPartnershipForChildren

on Instagram @hcopartnershipforchildren\_

on TikTok @HarnettPartnershipForChildren

on YouTube @harnettcountypartnershipfo9443



## EVENT LOCATIONS:

**Erwin COP and RTG Group:**

494 Antioch Church Rd, Dunn

**Lillington COP and RTG Groups:**

170 Pine State St, Lillington

**YMCA RTG Group:**

107 Carletta Cagle Dr, Cameron



## HCPC STAFF:

**Tara Fish**, Executive Director

**Janine Bogwicz**, Community Outreach Coordinator

**Jordan Ellis**, Family Support Specialist

**Debbie Fann**, Fiscal Specialist

**Ashleigh Goss**, Early Childhood Program Specialist

**Whitney Heath**, Family Support Specialist

**Melanie Jacobson**, Early Childhood Program Specialist



**Carmen Martell**, Lead Family Support Specialist

**Kim Polinski**, NC Pre-K Program Support Specialist

**Lynda Turlington**, Early Childhood Program Coordinator

**Lena West**, NC Pre-K Program Support Specialist

**Katie Willoughby**, Family Support Specialist





- - Erwin Ready to Grow Playgroup (RTG)
- - Circle of Parents (COP)
- - Open Play

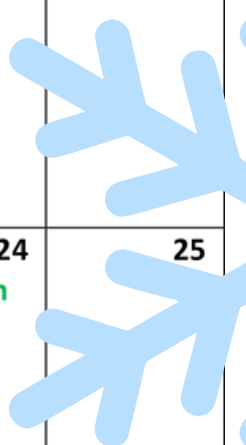
- - Lillington Ready to Grow Playgroup (RTG)
- - YMCA Ready to Grow Playgroup (RTG)



# January

SUN. MONDAY TUESDAY WEDNESDAY THURSDAY FRIDAY SAT.

			1 HCPC CLOSED for New Year holiday	2	3	4
5	6	7	8	9	10	11
12	13	14	15	16	17	18
9:30am- COP (Erwin) 10am- RTG (Lillington)	10am- COP (Lillington) 1:30pm- RTG (YMCA)	10am- RTG (Lillington) 10am- RTG (Erwin)	10am- COP (Lillington)	10am- Open Play w/ Zumbini		
19	20	21	22	23	24	25
HCPC Offices Closed for MLK Day 	10am- COP (Lillington) 1:30pm- RTG w/ Zumbini	10am- RTG (Lillington) 10am- RTG (Erwin)	10am- COP (Lillington)	10am- Open Play (Lillington)		
26	27	28	29	30	31	
9:30am- COP (Erwin) 10am- RTG (Lillington)	10am- COP (Lillington) 1:30pm- RTG (YMCA)	10am- RTG (Lillington) 10am- RTG (Erwin)	10am- COP (Lillington)	10am- Open Play (Lillington)		





## KIDDO SPOTLIGHT

### WESLEY, 4 YRS OLD

What do you like about playgroup?

“My friends!”

What outdoor activities are your favorite in winter?

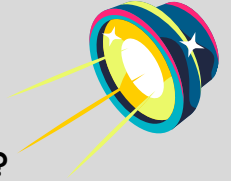
“Soccer and my stomp rocket toy.”

What are the best ways to make a fort?

“With a lot of pillows!”

What do you want to be when you grow up?

“Play with excavators!”



## JANUARY IS NATIONAL BATH SAFETY MONTH

It's important to never, ever leave baby unsupervised during bath time. Have everything within reach before you begin so you can always keep a hand on your little one to prevent slipping or rolling. Here are a few more bath safety tips for infants and young children:

- Ensure proper water temperature.
- Drain bath water in the bathtub when bath-time ends.
- Consider taking a CPR class.



## DOLLY PARTON'S IMAGINATION LIBRARY



Dolly Parton's Imagination Library is a book gifting program that mails free books to children from birth until their 5th birthday. **Register your child online today!**





Circle of Parents  
Círculo de Padres



# GROW ON THE GO

PLAY, LEARN, AND GROW TOGETHER

Parenting is joyful, but can also present difficulties and challenges.

Es una dicha ser padres, pero también presenta dificultades y desafíos.

Feel empowered, supported, and strengthened as you attend weekly Circle of Parents meetings. Join other Harnett County parents/caregivers at our Circle of Parents group.

Siéntase empoderado, apoyado y fortalecido mientras asiste a las reuniones semanales del Círculo de Padres. Únase a otros padres/proveedor de cuidados del Condado de Harnett en nuestro grupo de Círculo de Padres.

**CIRCLE of PARENTS®**  
*Sharing Ideas. Sharing Support.*



- MONDAYS @ 9:30AM  
LOCATION: 494 ANTIOCH CHURCH RD, DUNN
- TUESDAYS & THURSDAYS @ 10AM  
LOCATION: 170 PINE STATE ST, LILLINGTON

To register, email [familysupport@harnettsmartstart.org](mailto:familysupport@harnettsmartstart.org) or call 910-893-2344.

Para registrarse, envíe un correo electrónico a [familysupport@harnettsmartstart.org](mailto:familysupport@harnettsmartstart.org) o llame al 910-893-2344.



## HCPC's Newest Addition!

Grow on the Go is a mobile play unit to offer play and learn opportunities for Harnett County families with children between the ages of birth to five years old. Harnett County Partnership for Children holds Pop Up & Play events throughout the county each month. Be sure to follow us on social media or visit [www.harnettsmartstart.org](http://www.harnettsmartstart.org) for upcoming playtimes and locations!



[www.harnettsmartstart.org](http://www.harnettsmartstart.org)



# READY TO GROW

## GRUPO DE JUEGOS LISTO PARA CRECER

Ready to Grow Playgroup facilitates developmentally appropriate playgroups for children and caregivers who reside in Harnett County. Eligible children must be between the ages of birth through 5 years old. Playgroup facilitators use Kaleidoscope Play & Learn Curriculum to provide hands on activities that focus on early literacy and social emotional competency. Caregivers learn about the purpose of play and will connect with other parents during group time. Children and caregivers will participate in coordinated group activities to prepare the children for success in school.



El Grupo de Juegos Listo para Crecer tendrán sus reuniones en persona en Lillington. Las familias del condado de Harnett, que tengan niños recién nacidos hasta 5 años de edad, son bienvenidos a participar. Las familias tendrán la oportunidad de aprender y jugar con otras familias en persona.

Lillington Playgroup: Mondays and Wednesdays from 10am - 11:30am at 170 Pine State St, Lillington.

Lillington Grupo: Lunes y Miércoles de 10am - 11:30am @ 170 Pine State St, Lillington.



Erwin Playgroup: Wednesdays from 10am - 11:30am at 494 Antioch Church Road, Dunn.

Erwin Grupo: Miércoles de 10am - 11:30am @ 494 Antioch Church Road, Dunn.

YMCA Playgroup: Tuesdays from 1:30pm - 3pm @ 107 Carletta Cagle Dr, Cameron

YMCA Grupo: Martes de 1:30pm - 3pm @ 107 Carletta Cagle Dr, Cameron

# zumbini®

 with Ms. Katie!



CHECK THE HCPC MONTHLY CALENDAR - MUSIC NOTES INDICATE EVENTS THAT INCLUDE ZUMBINI!

Registration NOT Required!



# GRUPO DE JUEGOS LISTO PARA CRECER

## TEMA DEL MES:

Cerebro Asombroso

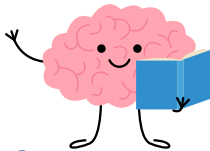
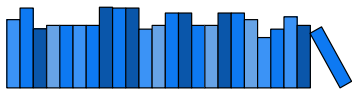
## LOS CUIDADORES APRENDERÁN:

- Sobre el desarrollo temprano del cerebro
- Lo importante que es interactuar (hablar y jugar) con los niños para apoyar el desarrollo del cerebro del niño



## MENSAJES CLAVE:

1. Nuestro cerebro se desarrolla más en los primeros seis años de vida.
2. Parte del desarrollo del cerebro es cuando diferentes partes del cerebro se conectan entre sí. Los cerebros de nuestros hijos siempre están construyendo conexiones.
3. Este tipo de desarrollo cerebral ocurre cuando los niños interactúan con las personas y exploran el mundo que los rodea, lo que ayuda a que sus cerebros se desarrollen y establezcan conexiones.



## LIBROS RECOMENDADOS:

- Eyes, Nose, Fingers, and Toes, by Judy Hindley
- My Five Senses, by Alik
- Silly Sally, by Audrey Wood
- Goodnight Moon, by Margaret Wise Brown

# READY TO GROW PLAYGROUP

## THEME OF THE MONTH:

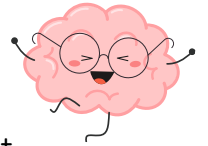
Amazing Brain



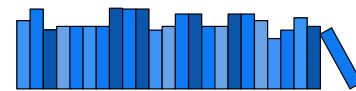
## CAREGIVERS WILL LEARN:

- About early brain development
- How important it is to interact (talk and play) with children to support the child's brain development

## KEY MESSAGES:



1. Our brains do the most development in the first six years of life.
2. Part of brain development is when different parts of the brain connect to each other. Our children's brains are always building connections.
3. This kind of brain development happens when children interact with people and explore the world around them helping their brains develop and build connections.



## BOOK RECOMMENDATIONS:

- Eyes, Nose, Fingers, and Toes, by Judy Hindley
- My Five Senses, by Alik
- Silly Sally, by Audrey Wood
- Goodnight Moon, by Margaret Wise Brown



# A MONTH OF MEMORIES

